

Life Saving Rules

charoen pokphand group co. ltd

SGC-Sustainability Development
Sustainability, Good Governance and
Corporate Communications Office, C.P. Group
18 July 2022

Work safe, together

Copyright © 2022. Charoen Pokphand Group Co., Ltd. All rights reserved. Strictly internal use for C.P. Group only.



TABLE OF CONTENTS

About Life Saving Rules	3
SHE Document Hierarchy	4
10 Life Saving Rules	5
Rule No.1 Overriding Safety Control	6
Rule No.2 Energy Isolation	7
Rule No.3 Confined Space	8
Rule No.4 Working at Height	9
Rule No.5 Work Authorisation	10
Rule No.6 Seat Belt	11
Rule No.7 Helmet	12
Rule No.8 Mobile Phone and Speed Limit	13
Rule No.9 Alcohol and Drugs	14
Rule No.10 Unauthorisation working with machine	15
Life Saving Rules Poster for Communication	16



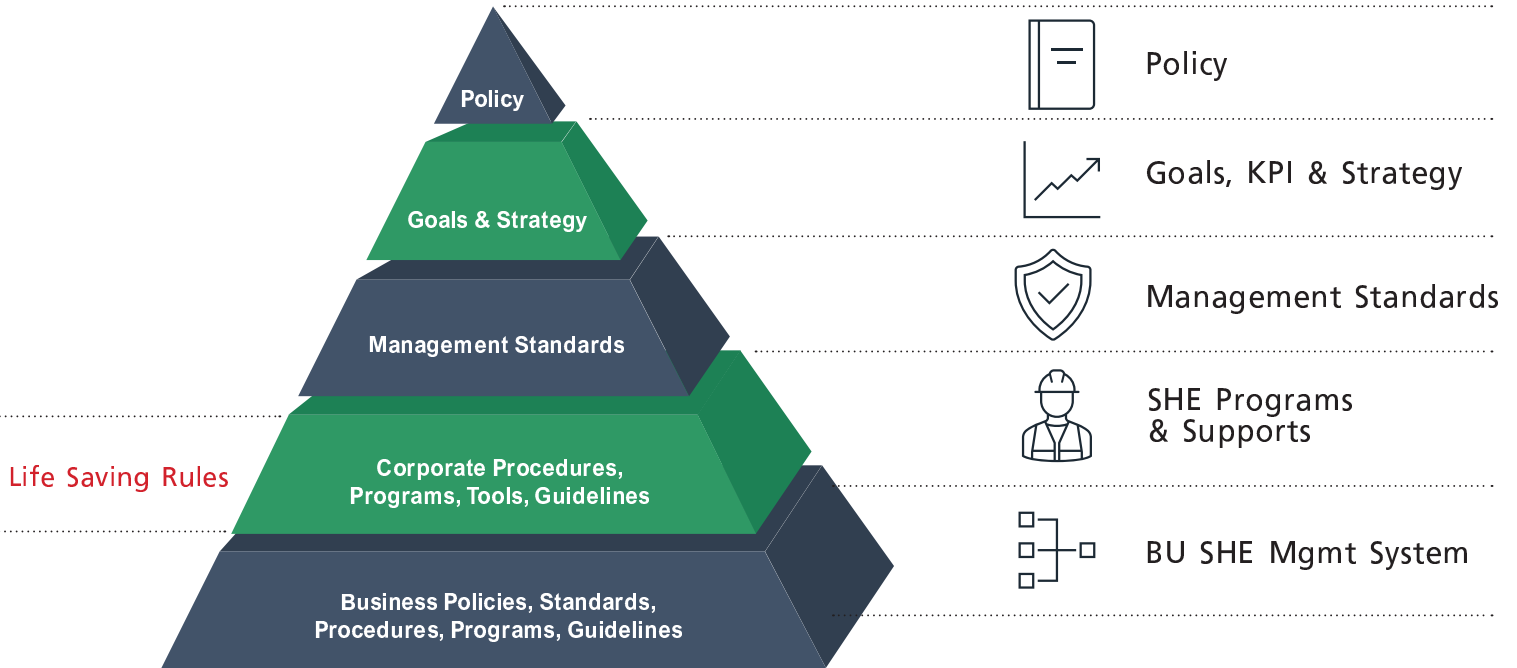
Life Saving Rules

Life Saving Rules are key actions to prevent fatal injuries during higher-risk activities

In case of violation to Life Saving Rules, investigation shall be conducted to find the cause of violation. Violation against this rules can result disciplinary actions. If you are a visitor, enter the company area will not allow. If you are a contractor termination of contract will be applied



SHE Document Hierarchy



C.P. Group's SHE Management Standards

Life Saving Rules

DO

1. Obtain autorisation before overriding or disabling safety-controls



2. Verify isolation and zero energy before work begins



3. Obtain authorisation before entering a confined space



4. Protect yourself against a fall when working at height



5. Work with a valid permit when required



6. Always wear your self belt while driving



7. Wear your helmet with chin straps both the driver and all passengers while riding the motorcycle

DON'T

8. While driving, do not use your phone and do not exceed allowable speed



9. No alcohol or drugs while working or driving/controlling machine



10. Do not operate a machine, equipment or vehicle if you have not been trained and authorized



1. Overriding Safety Control

Obtain autorisation before overriding or disabling safety-controls

Actions

- Understand and use safety equipment and procedure which apply to my task
- Obtain authorisation before disabling or overriding safety equipment, deviating from procedures or crossing a barrier/enter to restricted areas

Example of safety device or system : machine guard, emergency switch/valve, earth leakage circuit breaker, smoke/heat detector, overfill sensors)





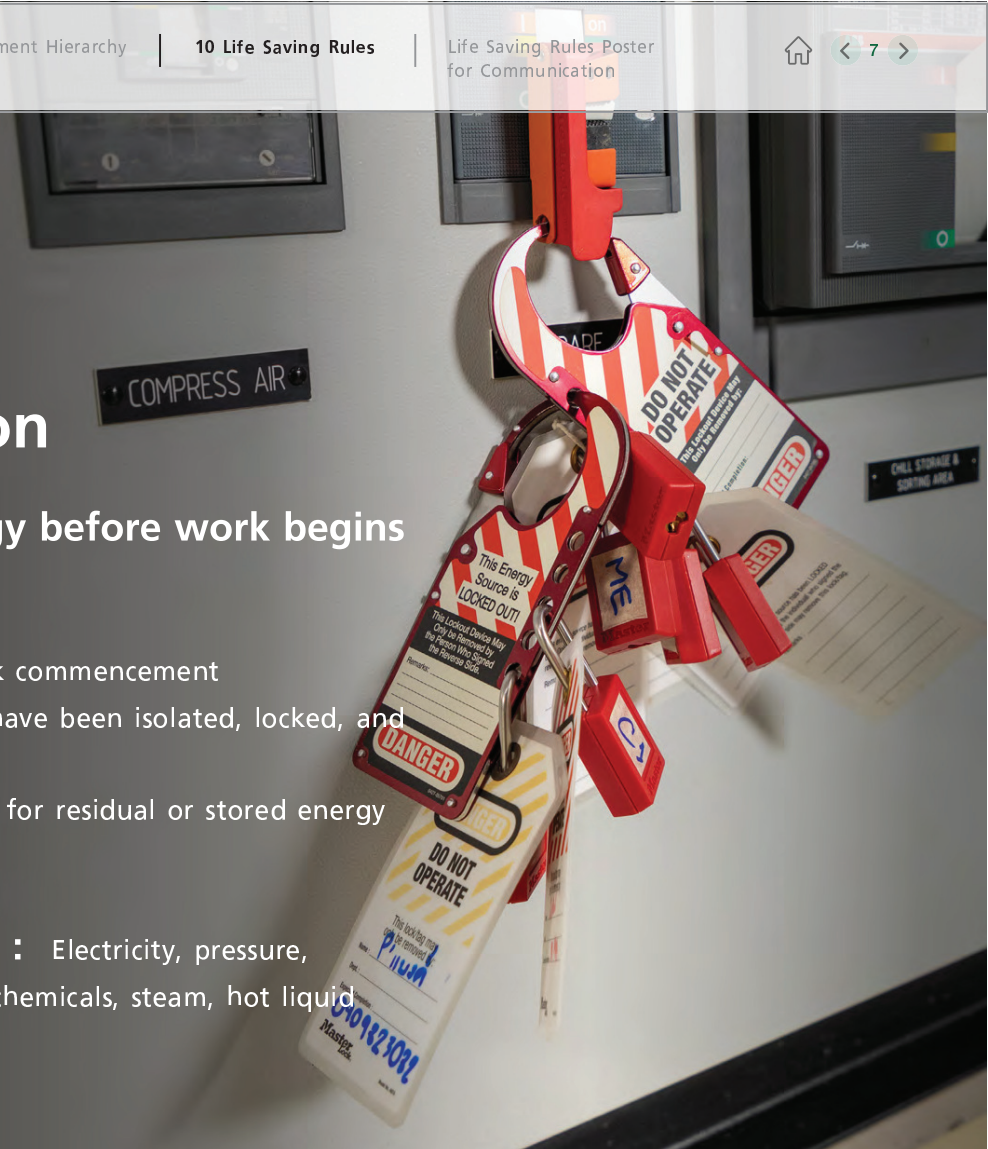
2. Energy Isolation

Verify isolation and zero energy before work begins

Actions

- Identified all energy sources before work commencement
- Confirm that hazardous energy sources have been isolated, locked, and tagged
- Checked there is zero energy and tested for residual or stored energy before work commencement

Example of hazardous energy : Electricity, pressure, hazardous substance, toxic gas, hazardous chemicals, steam, hot liquid and radiation





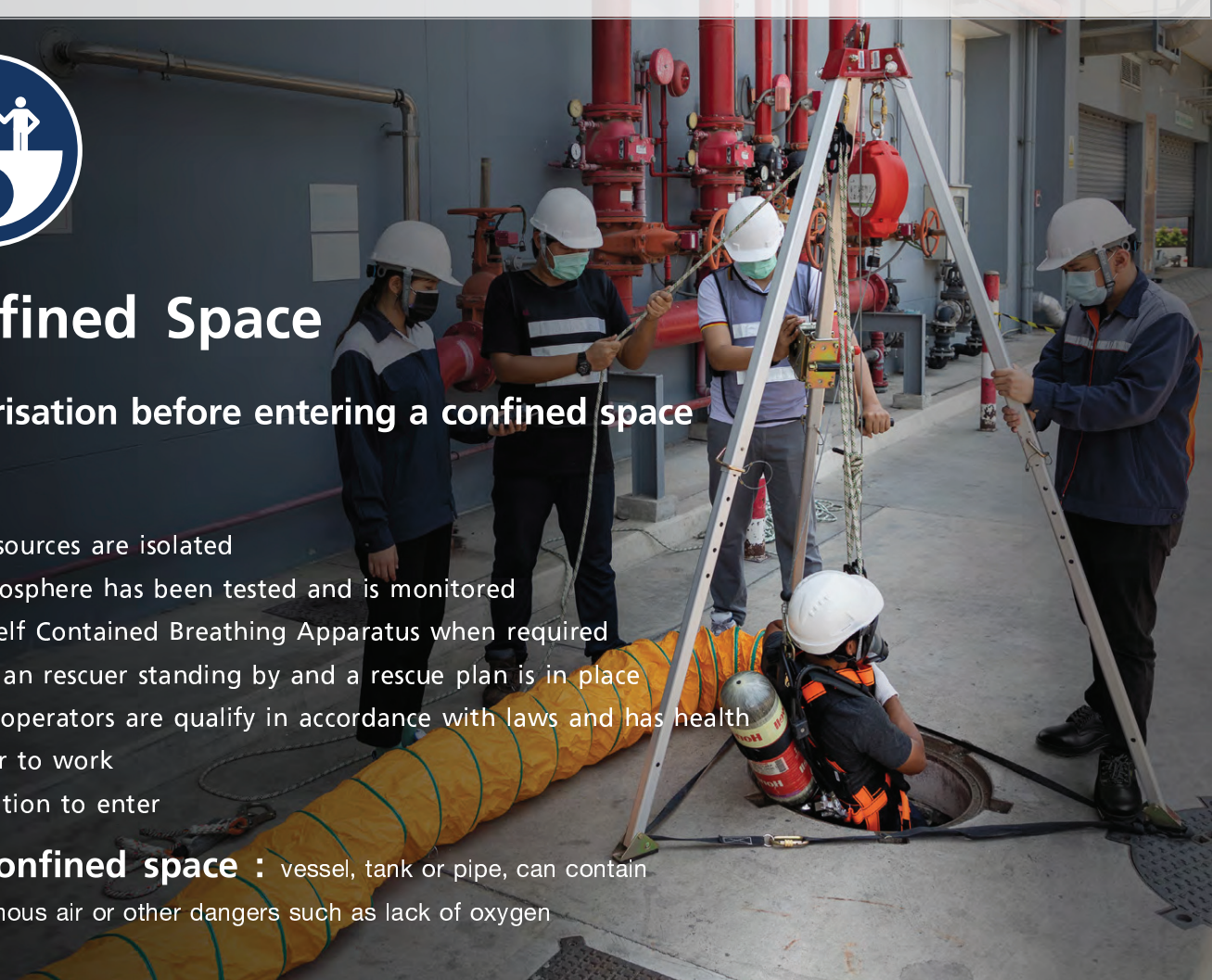
3. Confined Space

Obtain authorisation before entering a confined space

Actions

- Confirm energy sources are isolated
- Confirm the atmosphere has been tested and is monitored
- Check and use Self Contained Breathing Apparatus when required
- Confirm there is a rescuer standing by and a rescue plan is in place
- Confirm that all operators are qualify in accordance with laws and has health certification prior to work
- Obtain authorization to enter

Example of confined space : vessel, tank or pipe, can contain explosive gas, poisonous air or other dangers such as lack of oxygen



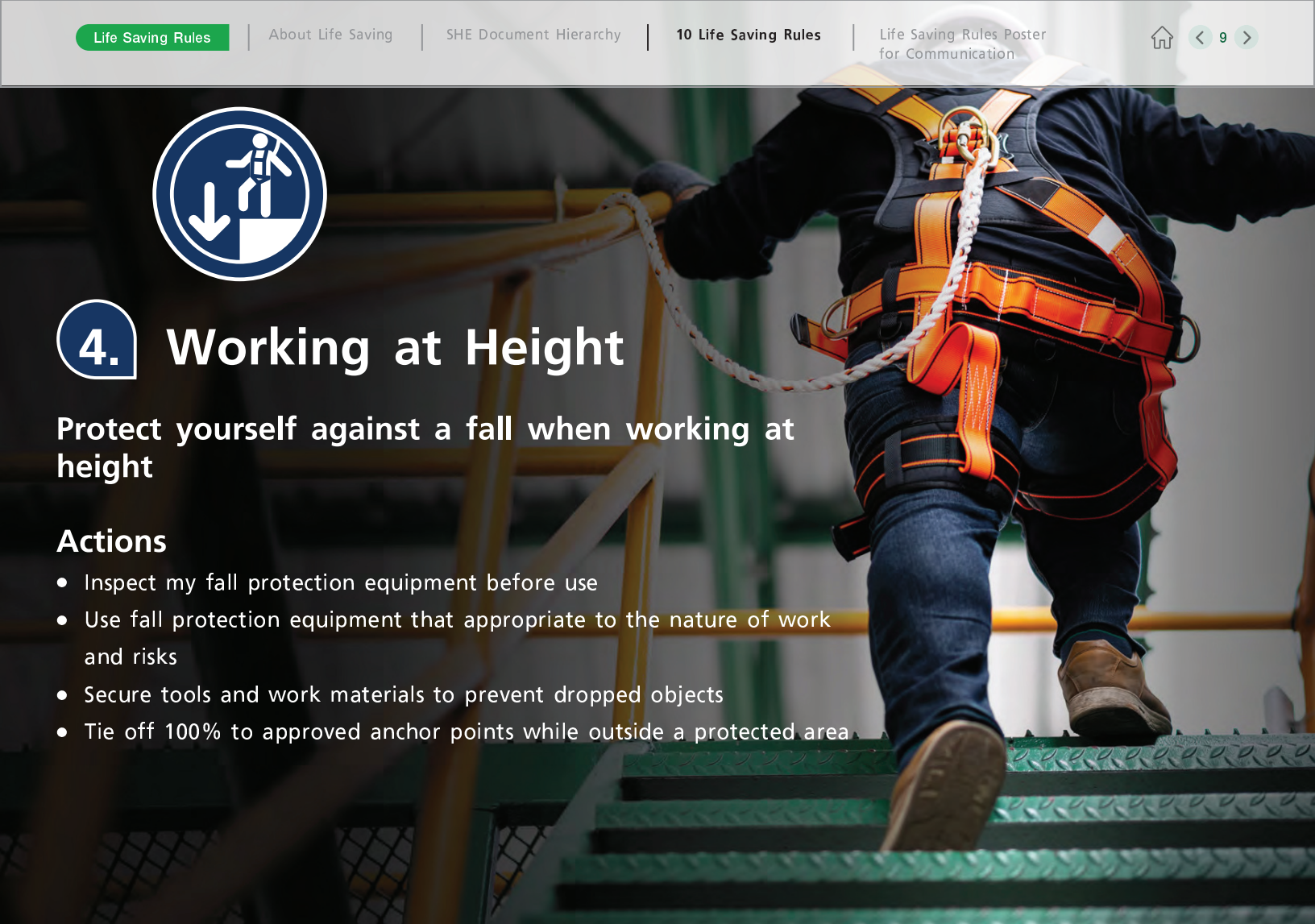


4. Working at Height

Protect yourself against a fall when working at height

Actions

- Inspect my fall protection equipment before use
- Use fall protection equipment that appropriate to the nature of work and risks
- Secure tools and work materials to prevent dropped objects
- Tie off 100% to approved anchor points while outside a protected area





5. Work Authorisation

Work with a valid permit when required

Actions

- Confirm if a permit is required
- Authorize to perform the work
- Understand the permit's details
- Confirmed that hazards are controlled and it is safe to start work
- Stop and reassess if conditions change and new hazards are introduced



6. Seat Belt

Always wear your seat belt while driving

Actions

- Check that your seat belt works properly.
- Keep your seatbelt properly fastened while in a moving vehicle.
- Check that everyone in the vehicle is wearing a seatbelt properly before starting to drive (if you are a driver).
- Intervene when your fellow passengers are not wearing seatbelts properly

Remark : (Cover all types of vehicles e.g. light vehicle, heavy vehicle, crane and forklift))



7. Helmet

Wear your helmet with chin straps both the rider and all passengers while riding the motorcycle

Actions

- Check that your helmet conforming to the standards or national regulations
- Check that your helmet and chin straps is in good conditions and fit with your head before riding
- Wear your helmet and chin straps properly while riding
- Intervene when your fellow passenger is not wearing helmet properly





8. Mobile Phone and Speed Limit

Do not use your phone and do not exceed allowable speed while driving

Actions

- Do not use a mobile phone, send or read text message, or use a hands-free mobile phone device
- Stay at or below the maximum allowable speed for the vehicle you are driving in and in compliance with national laws
- Adjust your speed to the prevailing conditions



9. Alcohol and Drug

No alcohol or drugs while working or driving/controlling machine

Actions

- Always inform your supervisor if you are taking medicine that may have effect on your performance
- If in doubt, always check with your supervisor or the person in charge who may seek medical advice
- Not use, keep, sell or distribute the illegal drugs
- Intervene if you see a case of alcohol or drugs abuse

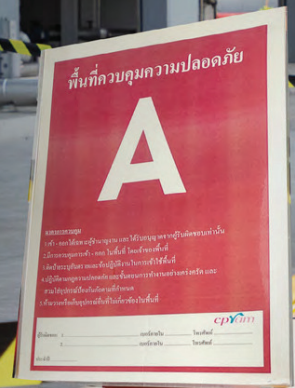


10. Unauthorized Person working with machine

Do not operate a machine, equipment or vehicle if you have not been trained and authorized

Actions

- Intervene or inform supervisor if you observe any personal working with machine, tool, equipment or vehicle without proper training or authorization
- Identify hazardous or restricted areas in workplace and control measures and strictly implement access control



Life Saving Rules

-  Obtain authorization before overriding or disabling safety critical equipment
-  Verify isolation before beginning work and using specific life protecting equipment
-  Obtain authorization before entering a confined space
-  Protect yourself against a fall when working at height
-  Work with a valid work permit when required
-  Wear your seat belt before starting the work while driving a vehicle
-  Wear a safety helmet when riding a motorcycle.
-  Do not use your phone while driving, and do not exceed speed limits
-  Do not drink alcohol or use drugs while working or driving
-  It is prohibited for unauthorized person to work with high risk machinery, equipment or vehicles

In case of violation to Life Saving Rules, investigation shall be conducted to find the cause of violation. Violation against this rules can result **disciplinary actions**.

If you are a visitor, enter the company area will not allow.

If you are a contractor termination of contract will be applied.



Announcement (Translation)

Charoen Pokphand Group

NO. 042/2022

Subject: Charoen Pokphand Group's Life Saving Rules

As Charoen Pokphand Group has established the 2030 Sustainability Goals and Direction aiming for internationally excellent organization under the three major strategies : Heart-Health-Home, Occupational Health and Safety have been considered as one of the very important aspect on "Human Rights and Labor Practices" which are our key focus area. Hence, zero fatality goal has been expedited forward from 2030 to 2023 and SHE KPIs are being deployed to all executives and employees throughout the organization.

In addition, The Corporate Life Saving Rules are genuinely established to protect the lives of our valuable people with the intent for all business operations to strictly implement. These rules are to be applied to all employees and contractors working under our operational control. Any breach will subject to company's disciplinary actions. Life Saving Rules are both rules that everyone must strictly follow (Do) or restrain from doing (Don't) with the aim to control and protect danger from high-risk operations and areas. The Group has realized that any negligence or violation could result in major injuries or even fatality.

In this regards, I would appreciate all executives and employees worldwide shall co-operatively and strictly implement these Life Saving Rules by integrating safety into all aspects of business operations.

Announcement Date: 7 December 2022.